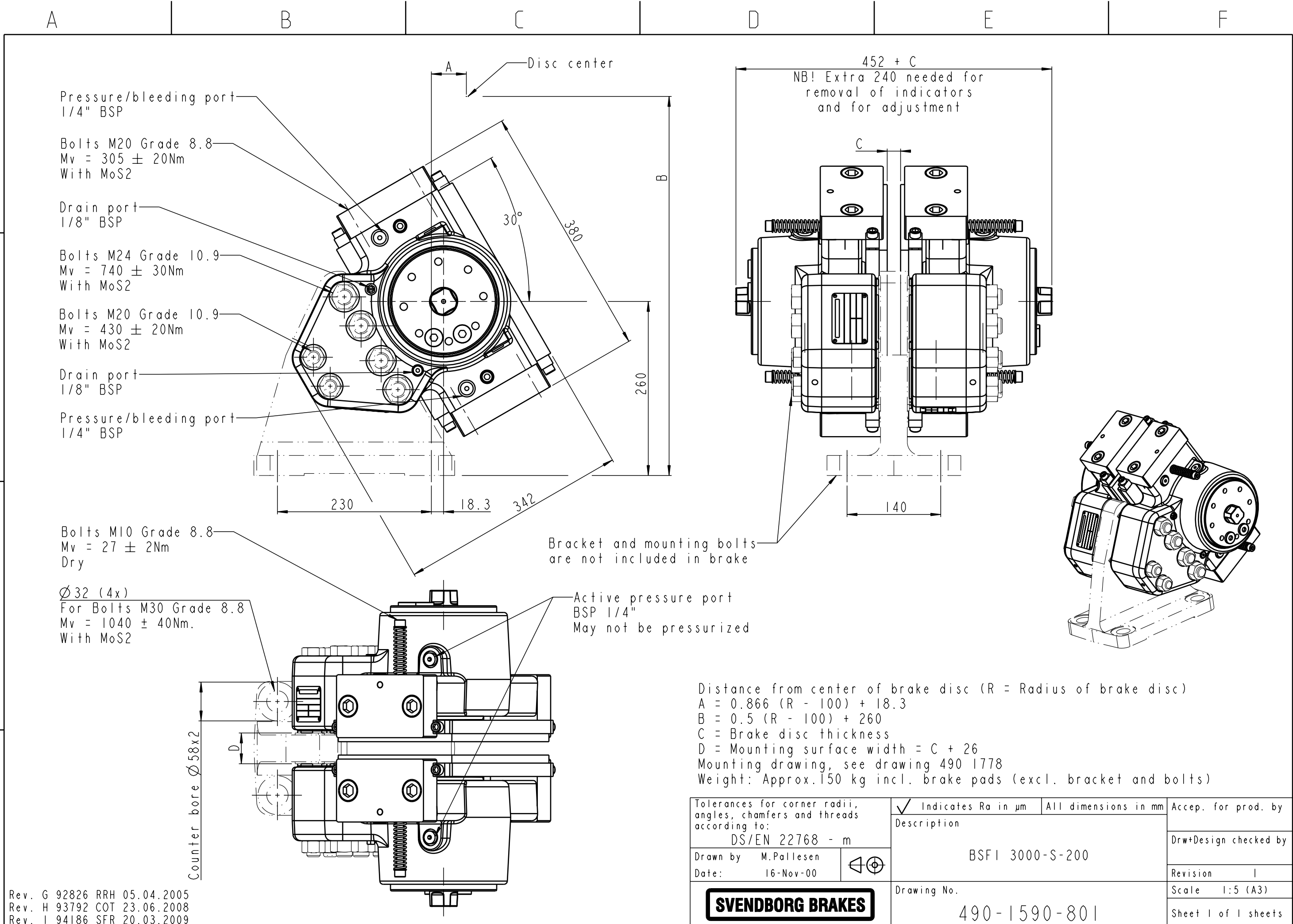


Denmark: Jernbanevej 9, 5882 Vejstrup, Denmark
Germany: Kirchnerstrasse 42, D-32257 Bünde, Germany

This drawing/document is the sole property of
Svendborg Brakes A/S and may not be copied,
given to a third party or used for unauthorized purpose



Rev. G 92826 RRH 05.04.2005
Rev. H 93792 COT 23.06.2008
Rev. I 94186 SFR 20.03.2009

Svendborg Brakes A/S reserves the right to revise
this document without prior notification or obligation

Tolerances for corner radii, angles, chamfers and threads according to: DS/EN 22768 - m		✓ Indicates Ra in µm	All dimensions in mm	Accep. for prod. by
Description		BSFI 3000-S-200		Drw+Design checked by
Drawn by M.Pallesen	Date: 16-Nov-00	Drawing No. 490-1590-801		Revision 1
				Scale 1:5 (A3)
SVENDBORG BRAKES				Sheet 1 of 1 sheets

CONFIDENTIAL

CHECKED by SYSTEM 12-04-2010
RELEASED by sfr