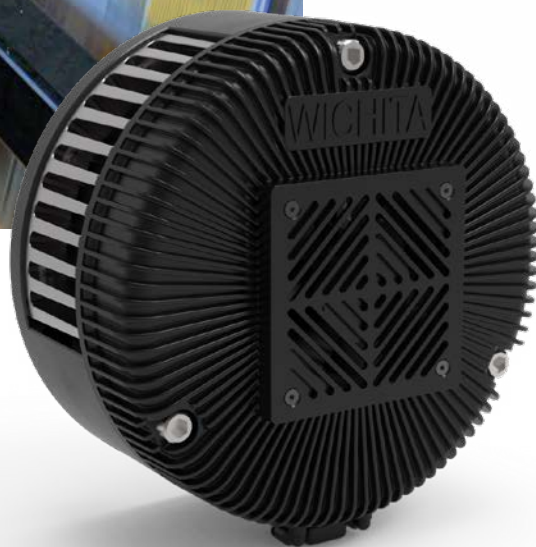




## Mistral II Pneumatic Tension Brakes





## MISTRAL II PNEUMATIC BRAKES

*Mistral II*

**Wichita Clutch**, leading multinational designer and manufacturer of innovative power transmission products, have developed the Mistral II series of pneumatic tension brakes to meet the needs of the global paper converting industry. Building on the success of the original Mistral design widely used in corrugating, foil and film processing, and paper converting lines, the new range addresses market demand for an updated brake without compromising the industry-leading performance of the legacy model.

Extensively tested in-house, the Mistral II has been benchmarked against products from competing brands and meets or exceeds all performance criteria. The result is a compact, high-performance and versatile product capable of fulfilling tensioning needs of the latest machine designs.

## FEATURES

### Design

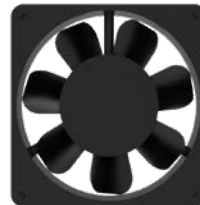
Mistral II is compact at 295 mm diameter, facilitating the pick-up of small or part-reels used in short batch runs. The new, vented housing is semi-gloss black powder coated for durability and aesthetics. Internally, an integrated high-performance, low energy cooling fan enables high heat dissipation to support increased productivity. Removing just three cap screws provides access to the internal parts. Fine tuning of torque capacity is achieved with a variable number of actuators for optimum tension control.

### Mounting

Three bolts mount the brake to the arm of the mill roll stand or machine frame and a pilot location simplifies new build and retro-fit installations.

### Safety

Mistral II retains the integral guard of the original, eliminating the costs associated with providing additional guarding.



### Integrated Cooling

A high performance, low energy cooling fan is housed within the brake to provide high heat dissipation - a must for higher productivity through controlled tension at high web speeds.

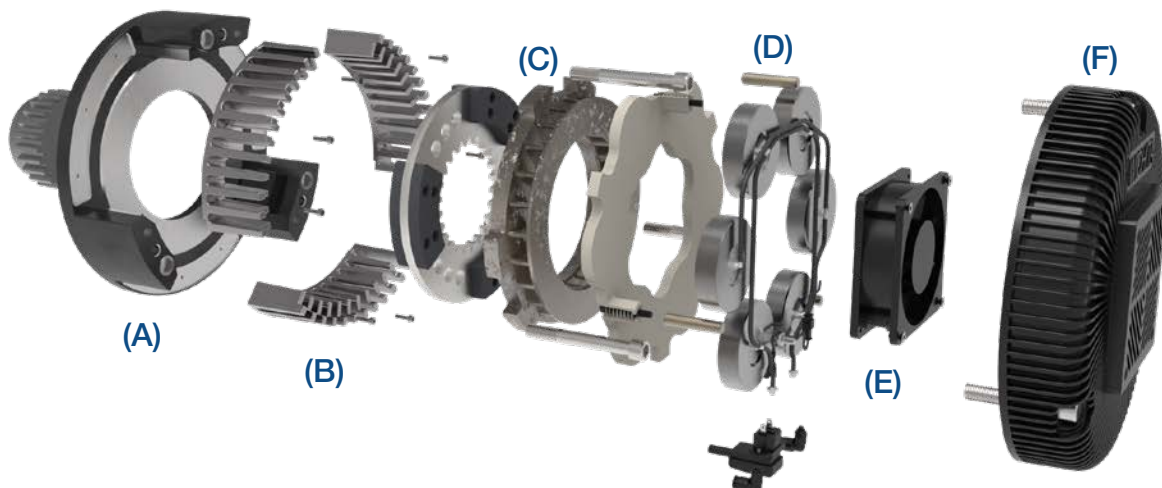
### Fine Tuning

The brake may be fitted with a variable number of actuators, allowing precise selection of brake torque capacity for optimum tension control.



### Front Cover Fixing

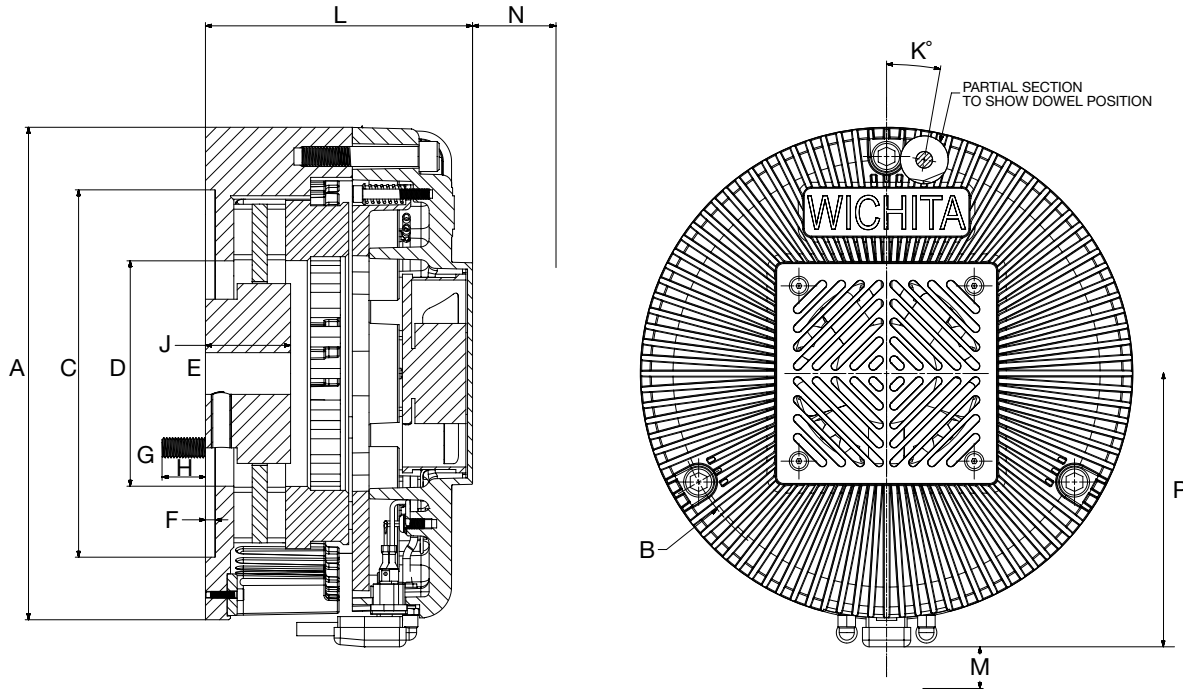
By removing just three cap screws, the front cover can be removed, allowing easy and fast access to the internal parts, which will also automatically disconnect the air and electricity supply.



Exploded view of the Mistral II, showing major components (A) ring and backplate, (B) heat sinks, (C) floating plate, (D) actuator assembly, (E) Fan and (F) cover

## Dimensions (mm)

*Mistral II*



E – maximum permissible shaft dia.  
 M – space required for plug removal  
 N – distance required for cover removal

Model	A	B	C	D	E	F	G	H	J	K	L	M	N	P
200	295	260	220 H7	N/A	60	6	3xM12	26	51	10	160	25	50	163

Model	Fan Voltages	Fan Power	Electric	Pneumatic
200	220 VAC	16 W	Standard IEC Plug	6 mm OD push-fit tube
	110 VAC			
	24 VDC	13.2 W		

Actuator/Inlet	'AA'	'BB'
200/2	2	0
200/4	2	2
200/6	2	4

## Performance

Model	Dynamic Slipping Torque Capacity			Heat Transfer Capacity			Max Speed	Inertia of Rotating Parts	Weight	
	Standard Friction Material			No Fan	With Fan				Total Brake	Rotating Parts
	0.2 bar	5.5 bar	6 bar		Cont.	30 Min On/Off				
	Nm	Nm	Nm	kW	kW	kW	rpm	kgm <sup>2</sup>	kg	kg
200/2	7	198	216	1.1	2.4	2.8	2860	0.01	21.3	3.5
200/4	14	396	432						21.8	
200/6	22	594	648						22.2	

The Mistral II is highly linear in its response: The dynamic braking torque is directly proportional to the incoming air supply pressure and the quantity of actuators employed.

## Wichita Clutch Facilities

### Europe

**United Kingdom**  
Amphill Road  
Bedford MK42 9RD - England  
+44 (0) 1234 350311  
*Pneumatic Clutches  
and Brakes*

### North America

**USA**  
2800 Fisher Road  
Wichita Falls, TX 76302 - USA  
940-723-3400  
*Pneumatic Clutches  
and Brakes*

### Asia Pacific

**Australia**  
+61 2 9894 0133  
**China**  
+86 21 5169-9255  
**Hong Kong**  
+852 2615 9313  
**Singapore**  
+65 6487 4464  
**Taiwan**  
+886 2 2577 8156  
**Thailand**  
+66 2322 5527

## The Brands of Altra Motion

### Couplings

**Ameridrives**  
[www.ameridrives.com](http://www.ameridrives.com)  
**Bibby Turboflex**  
[www.bibbyturboflex.com](http://www.bibbyturboflex.com)  
**Guardian Couplings**  
[www.guardiancouplings.com](http://www.guardiancouplings.com)  
**Huco**  
[www.huco.com](http://www.huco.com)  
**Lamiflex Couplings**  
[www.lamiflexcouplings.com](http://www.lamiflexcouplings.com)  
**Stromag**  
[www.stromag.com](http://www.stromag.com)  
**TB Wood's**  
[www.tbwoods.com](http://www.tbwoods.com)

### Linear Systems

**Thomson**  
[www.thomsonlinear.com](http://www.thomsonlinear.com)

### Geared Cam Limit Switches

**Stromag**  
[www.stromag.com](http://www.stromag.com)

### Engineered Bearing Assemblies

**Kilian**  
[www.kilianbearings.com](http://www.kilianbearings.com)

### Electric Clutches & Brakes

**Matrix**  
[www.matrix-international.com](http://www.matrix-international.com)  
**Stromag**  
[www.stromag.com](http://www.stromag.com)  
**Warner Electric**  
[www.warnerelectric.com](http://www.warnerelectric.com)

### Belted Drives

**TB Wood's**  
[www.tbwoods.com](http://www.tbwoods.com)

### Heavy Duty Clutches & Brakes

**Twiflex**  
[www.twiflex.com](http://www.twiflex.com)  
**Stromag**  
[www.stromag.com](http://www.stromag.com)  
**Svendborg Brakes**  
[www.svendborg-brakes.com](http://www.svendborg-brakes.com)  
**Wichita Clutch**  
[www.wichitaclutch.com](http://www.wichitaclutch.com)

### Gearing & Specialty Components

**Bauer Gear Motor**  
[www.bauergears.com](http://www.bauergears.com)  
**Boston Gear**  
[www.bostongear.com](http://www.bostongear.com)  
**Delevan**  
[www.delevan.com](http://www.delevan.com)  
**Delroyd Worm Gear**  
[www.delroyd.com](http://www.delroyd.com)  
**Nuttall Gear**  
[www.nuttallgear.com](http://www.nuttallgear.com)

### Engine Braking Systems

**Jacobs Vehicle Systems**  
[www.jacobsvehiclesystems.com](http://www.jacobsvehiclesystems.com)

### Precision Motors & Automation

**Kollmorgen**  
[www.kollmorgen.com](http://www.kollmorgen.com)

### Miniature Motors

**Portescap**  
[www.portescap.com](http://www.portescap.com)

### Overrunning Clutches

**Formsprag Clutch**  
[www.formsprag.com](http://www.formsprag.com)  
**Marland Clutch**  
[www.marland.com](http://www.marland.com)  
**Stieber**  
[www.stieberclutch.com](http://www.stieberclutch.com)

Neither the accuracy nor completeness of the information contained in this publication is guaranteed by the company and may be subject to change in its sole discretion. The operating and performance characteristics of these products may vary depending on the application, installation, operating conditions and environmental factors. The company's terms and conditions of sale can be viewed at <http://www.altramotion.com/terms-and-conditions/sales-terms-and-conditions>. These terms and conditions apply to any person who may buy, acquire or use a product referred to herein, including any person who buys from a licensed distributor of these branded products.

©2021 by Wichita Clutch LLC. All rights reserved. All trademarks in this publication are the sole and exclusive property of Wichita Clutch LLC or one of its affiliated companies.